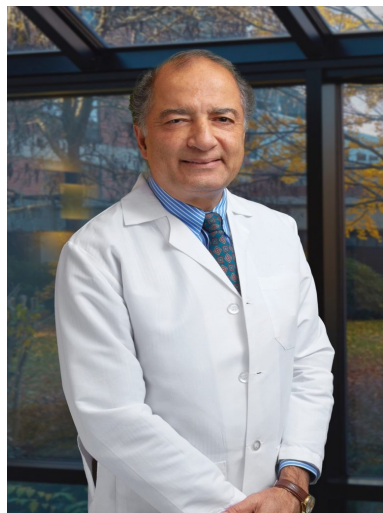
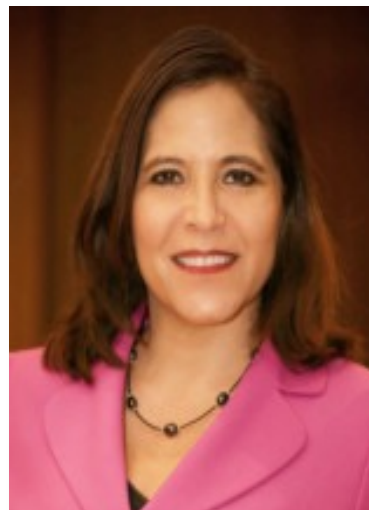


Clinical Trials – Conversations with Community Oncologists



Dinesh Kapur, M.D.
Medical Oncologist
Eastern Connecticut
Hematology Oncology



Rose Gerber, M.S.
Director of Patient Advocacy &
Education
Community Oncology Alliance

Today's Chat Agenda

- **Updates: Community Oncology Alliance (COA) and COA's Patient Advocacy Network (CPAN)**
- **About Eastern Connecticut Hematology and Oncology**
 - **A community oncology practice**
- **The role of a community oncologist in introducing clinical trials**
- **Conversations about clinical trials**
- **How OneOncology is expanding access to clinical trials**

Learn more:

COA's Patient Advocacy Network: www.coaAdvocacy.org

Community Oncology Alliance: www.communityoncology.org

Eastern Connecticut Hematology Oncology: www.echoassociates.org



A Beacon of Light on Your Cancer Care Journey

Search ...



Patient Portal

EASTERN CONNECTICUT HEMATOLOGY & ONCOLOGY ASSOCIATES

[About Us](#)

[Your Care](#)

[ECHO Foundation](#)

[Our Team](#)

[Clinical Trials](#)

[Patient Info](#)

[Contact Us](#)

[Company Updates](#)

Our History

In 1985, Dr. Dennis Slater moved from Memorial Sloan Kettering Cancer Center in New York to Norwich, Connecticut. This was in response to the recruitment by The William W. Backus Hospital for a medical oncologist.

He began a private practice with the objective of developing a program that would allow patients to receive state-of-the-art cancer treatment within the comfort and convenience of their own community.

Over time, Eastern Connecticut Hematology and Oncology grew in size and scope and became the predominant private practice in the area. We continue to bring in talented physicians who come from the leading healthcare institutions across the county. Our number of patients and services has dramatically increased. But, our focus on providing exceptional cancer care in a location close to home has remained consistent.



A Beacon of Light on Your Cancer Care Journey

Search ...



Patient Portal

EASTERN CONNECTICUT HEMATOLOGY & ONCOLOGY ASSOCIATES

[About Us](#)

[Your Care](#)

[ECHO Foundation](#)

[Our Team](#)

[Clinical Trials](#)

[Patient Info](#)

[Contact Us](#)

[Company Updates](#)

Many people believe they need to travel to major cities or hospitals to participate in the most current clinical trials. That is simply not the case; ECHO provides access to some of the leading clinical trials that are available in the country.

Patients do not need to venture to large institutions to access the latest clinical trials. They can now access these same studies much closer to home.

Clinical Trials

Bladder
Urothelial

Lymphoma

Colorectal

Prostate

Lung

Solid
Tumors

Screening

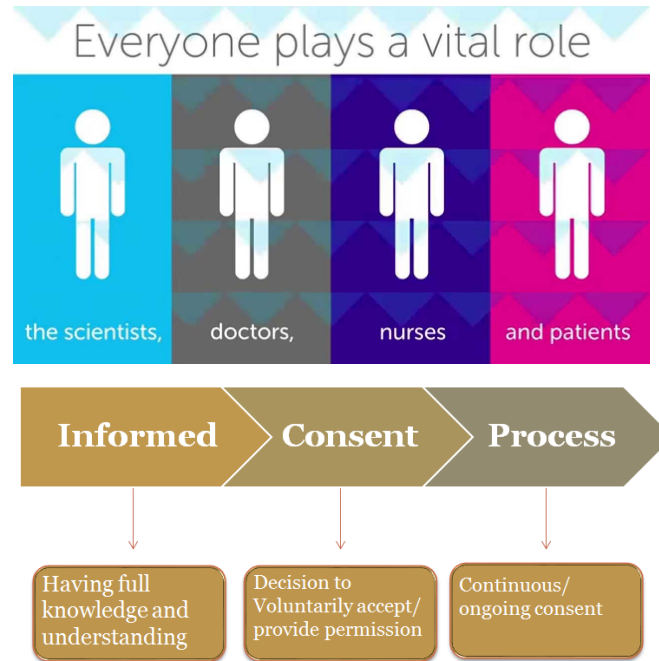
Lung
Screening

Supportive
Care

The role of community oncology in introducing clinical trials



Dr. Jagathambal



Nurse Lynn Mortoro, and Dr. Anca Bulgaru

For many years, ECHO has been recognized as one of the top two practices in the state of Connecticut offering clinical trials, second only to Yale.

Conversations About Clinical Trials

What is the drug approval process?

What are the possible risks of participating in a clinical trial?

What are the benefits of being on a clinical trial?

Do I have to pay to be in a clinical trial?

At what point during my treatment can I join a clinical trial?

Where does ECHO offer clinical trials?

What are the potential benefits of participating in a clinical trial?

What is informed consent?

Can I quit a clinical trial?

What are the chances I will get a placebo?

Why should I join a clinical trial at ECHO?

What does the "phase" of a clinical trial mean?

How do I know if I'm eligible to join a clinical trial?

Are clinical trials safe?

ECHO A Proud Partner of OneOncology

How OneOncology is expanding access to clinical trials



[About Us](#)

[Partners](#)

[Research](#)

[Patients](#)

[Blog](#)

[Culture & Careers](#)

OneR, changing the future of research

At the OneOncology Research Network (OneR), our mission is to expand access to innovative clinical research for all patients treated in our community-based partner practices.

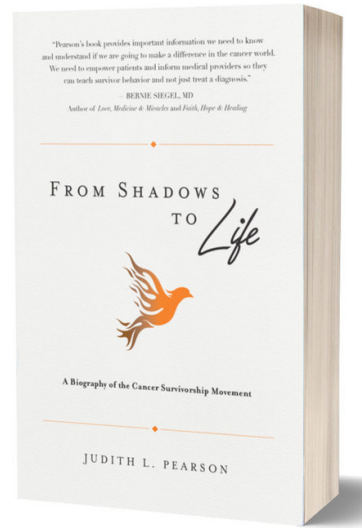


Thank You to Dr. Kapur & Our Listeners!

Don't miss our next advocacy chat

Wednesday, June 8, 2022, 12:00 PM – 12:30 PM ET

From Shadows to Life: A Biography of the Cancer Survivorship Movement



Judy L. Pearson
Author